



PULTENEY

Prospectus

Since 1847



Content

A photograph of two young girls in school uniforms playing outdoors. One girl is standing and laughing, while the other is crouching next to her. They are surrounded by green foliage and a tree trunk. The scene is brightly lit, suggesting sunlight filtering through the leaves.

- 4** Principal's Welcome
- 6** Our Learning Principles
- 7** The Learner Compass
- 9** Early Learning Centre
from 3 years of age
- 11** Junior School
Reception – Year 6
- 13** Middle School
Years 7 – 9
- 15** Senior School
Years 10 – 12
- 17** Technology in Education
- 19** Visual & Performing Arts
- 21** Sport & Activities
- 23** Experiential Learning
- 25** Wellbeing
- 27** Inclusive Support
- 29** Strength of Community
- 30** Teamwork & Leadership
- 32** Enrolment is as easy as 1, 2, 3...

WELCOME ...to Pulteney



Mission

To provide a meaningful and useful educational experience for each and every student that enables them to be their best self.

Vision

To prosper.

Education is the gift which shapes a life.

Welcome to Pulteney Grammar School, where we embrace the opportunity to be a part of your child's educational journey.

As a school with a rich history, carved in South Australia's educational landscape, Pulteney celebrates its heritage as an institution committed to academic excellence.

While honouring its traditions, Pulteney is recognised for its innovative learning methods and as a leader in modern approaches to education.

Our dedicated and passionate teachers are committed to providing the best possible outcomes for every student. They invest time and effort to understand the unique strengths and passions of each child, creating an individualised approach to learning that goes beyond the classroom.

Your school years shape not only future career success, but it is also a time where social connections are made, and one's character takes form. At Pulteney, we value the responsibility of nurturing and guiding young people, understanding their strengths and talents, and assisting them to reach their potential.

Thank you for considering Pulteney for your child's education. I look forward to meeting you.



Deb Dalwood
Interim Principal

deborah.dalwood@pulteney.sa.edu.au

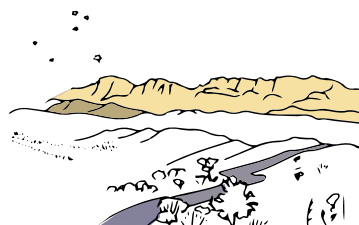
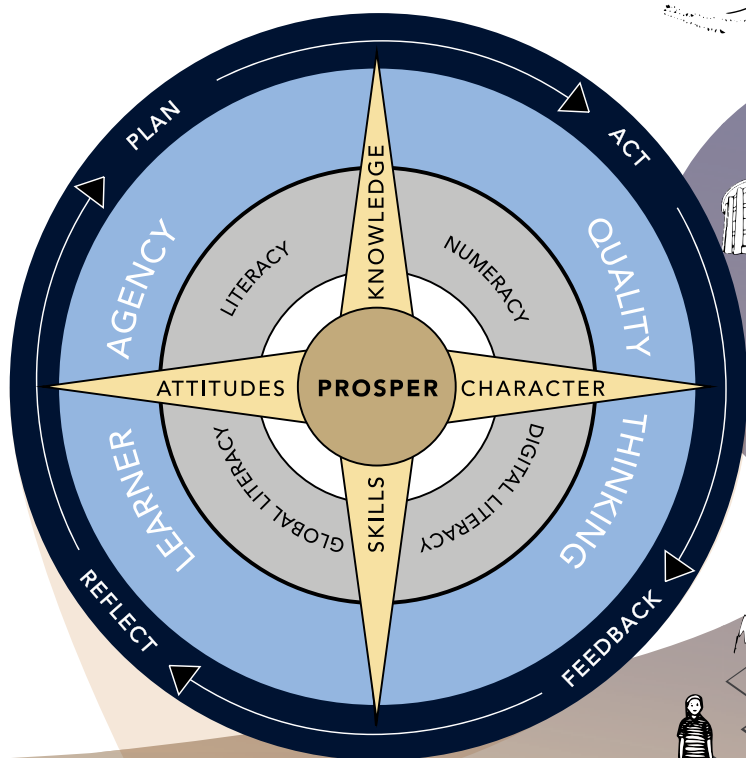
Our Learning Principles

Pulteney students prosper when:

- Learning is socially constructed and connected: locally, globally and digitally
- Learning is inclusive and personalisable and is designed in recognition of a student's strengths, interests and passions to inform learner pathways
- Learning is evidence-informed and data-driven and is enabled by continuous quality feedback and assessment practices that identify mastery, readiness and growth
- Learning experiences foreground the transfer of knowledge, skills and conceptual understanding for deep learning and growth
- Quality thinking and learner agency are taught, applied, recognised and grown.



The Learner Compass



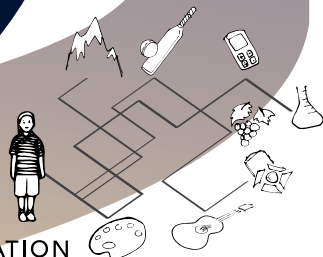
BOUNDLESS



ENDURING



AUTHENTIC
RELATIONSHIPS



PERSONALISATION

ACTING WITH
PURPOSE

"We stand hand in hand with the child as a learner, to encourage them to perform to the best of their abilities, always evolving and learning as the process is never complete. We aim to awaken their wonder and nourish their own amazement and potential."

ALI BLAKE, HEAD OF ELC



Early Learning Centre

FROM 3 YEARS OF AGE

Pulteney's Early Learning Centre (ELC) is the start of learning and discovery at Pulteney. Here, our youngest students get their hands dirty, activate their senses and experience the richness of life. We take young minds and mould them into creative, critical, ethical and divergent thinkers.

Purpose built for young children, our ELC captures and extends the inquisitive nature of young children as they negotiate their learning journey in a safe and supportive environment.

Our educational philosophy, inspired by Reggio Emilia principles, is based on the whole child with a focus on play-based activities. The curriculum follows the Early Years Learning Framework (EYLF), which provides principles that ensure that your child

is assisted to make progress towards their learning outcomes.

A strong emphasis is placed on play-based inquiry and the importance of communication, connection and language. Early literacy and numeracy are essential components in the support and enhancement of the children's development.

Within our ELC we provide a program staffed by qualified teachers and co-educators during school terms. Alongside our core curriculum, specialist lessons are also included in the program, including Chinese, Music, Art, Library and Nature walks.

Our ELC encourages wonder, self-confidence and a connection to the world, sparking curiosity in our 3 and 4 year old children.

“A safe and secure learning environment, where ideas are valued, empowers students to think for themselves, contribute to discussions and solve problems. We strive to build strong relationships between students, teachers, parents and the community.”

JASON FAY, HEAD OF JUNIOR SCHOOL



Junior School

RECEPTION – YEAR 6

Whether your child is in Reception or Year 6, during their time in Pulteney's Junior School they will be inspired to be curious, to extend their interest in the world around them and to confidently encounter new situations.

The junior years are an exciting stage of discovery where the abilities and interests of our young people grow. During their time in the Junior School, each child can explore new experiences, foster teamwork and collaborative skills and develop passions through a broad suite of subjects and co-curricular activities. As their confidence in learning prospers, each child is inspired to be creative, independent and critical in their thinking, and reflective in their learning.

Specialist teachers provide creative and enriching learning experiences that are designed to be meaningful, relevant and challenging and our exceptional teaching staff recognise the need to cater for individual differences.

Personal development is our focus at Pulteney, so students are inspired to indulge their passions, are empowered to ask the hard questions and dream about the open-ended future of who they might become.

The Junior School curriculum has been designed to integrate academic learning with social development. Learning begins with strong foundations in literacy and numeracy extended through a diverse and rich curriculum that will provide children with a myriad of opportunities in and beyond the classroom.

Our extensive leadership program for our older Junior School students complements personal and social learning as well as academic learning, while daily explorations develop relationships and associations with the community. Each facet contributes to students' growing identity and sense of self.

You can be confident that your child will emerge from their early years at Pulteney's Junior School, full of confidence and knowledge.



“The journey from childhood to young adult crosses over Middle Schooling. We incorporate passionate teaching, an interesting and exciting curriculum, and a strong focus on wellbeing.”

LAUREN CONNOLLY, HEAD OF MIDDLE SCHOOL



Middle School

YEARS 7-9

When students cross the bridge from child to early adulthood, there is both trepidation and excitement as they take on greater responsibilities and become more independent. Our dedicated and enthusiastic home group teachers support student wellbeing throughout this journey.

A foundation of respect, inclusivity and open communication provides students with a strong sense of awareness and fosters a positive social and emotional learning environment.

Pulteney draws families from throughout greater Adelaide and Middle School is an important

opportunity to build relationships that will define each child's education and provide a supportive network of friends. The School's House Program provides the home for each student within the broader school environment; tutors partnering with students for their journey through the Middle School to maintain the constancy of relationship and oversight of learning that is present throughout the Junior School.

Whilst fostering confidence, risk-taking and resilience, we challenge students to achieve their personal best and take responsibility for their learning, ensuring they are motivated for their future learning endeavours.

“The Senior School plays a pivotal role in shaping an individual’s academic and personal development. We prioritise fostering strong relationships between the School and home, empowering students to cultivate self-agency, recognise their strengths and confidently embrace life’s opportunities.”

ZAC SAVAGE, HEAD OF SENIOR SCHOOL



Senior School

YEARS 10-12

The final years of schooling consolidate the learning aspirations of our students in preparation for their future.

Possibilities are endless and Pulteney graduates pursue their passions towards their adult lives.

Ensuring the wellbeing of our students is of prime importance as we prepare them for life beyond school. Students feel supported, seen and heard via the pastoral care provided by Heads of House and Tutors. Further, our Wellbeing Team and Co-ordinator of Futures provide support with individual wellbeing and learning pathway opportunities.

As they enter the modern world, students require maturity, confidence, and a repertoire of independent learning skills. We offer a broad and rich curriculum that supports students to develop the personal attributes and passion they need to be a life-long learner.

Enterprise is the heartbeat of a city and real-world learning opportunities.

Pulteney's futures-oriented and contemporary 'Osmond Street

Precinct' provides opportunities for students to combine practical skills with business studies and design thinking strategies.

This engagement in authentic learning activities fosters collaboration with the broader City of Adelaide.

Pulteney's Centre for Senior Learning provides a well-rounded and complete learning experience, offering senior students an environment reflective of current and future global trends in study and workspaces.

The facility features shared breakout spaces, ubiquitous technology, pods for reflective work and collaborative enquiry and sight lines with panoramic views.

Students thrive in this inspiring urban environment that connects them to the city.

Graduates leave Pulteney well prepared for their exciting futures, with the skills and desire to not only make meaningful contributions in their lives beyond Pulteney, but to prosper in all that they do.



Student learning is at the heart of everything we do at Pulteney Grammar School. Technology in education serves as a tool to enable personalised, empowered learning.

Technology in Education

The role of technology in education is to support the learning process enabling learning opportunities that are dynamic, efficient and rich in content and experience.

In the Junior School, devices are deployed with purpose to support or enable specific learning opportunities. This evolves through to Years 5 and 6 when students engage with technology to assist with managing, arranging, publishing and augmenting their learning. Operating in a pluralist environment, students Bring Their Own Device (BYOD) throughout Years 7-12 and are educated in the needs and expectations of responsible digital literacy.

The School's learning environment is fully integrated with Wi-Fi and Bluetooth technology and online learning continues to evolve towards providing greater flexibility towards asynchronous learning.

We place a strong emphasis on cyber security education, equipping our students with essential skills to navigate and thrive in the digital age. Through dedicated lessons and practical experiences, students learn about online safety and responsible behaviour in cyberspace. This focus on cyber security is integrated across various subjects, preparing our students to be responsible digital citizens and future leaders in an increasingly connected world.



The city is our muse. We are fortunate to have in our backyard the rich array of theatres, galleries, museums, festivals and urban environment that makes teaching the Arts at Pulteney so exciting.

Visual & Performing Arts



Our Visual Arts studios are contained in a warehouse-style space for students to develop and express their visual abilities. Art is often a messy business and requires room to express creativity. Students from Early Learning through to Year 12 have constructed many an ambitious installation, showcasing their painting, craft, sculpture, drawing, mosaic and leadlight skills. Our art education has a strong focus on contemporary design applications, including digital media, animation, photography, film, landscape and interior design, and web development.

Our Performing Arts offers an extensive program. Music is offered in the curriculum from ELC to Year 12 and via private instrumental tuition during school. Our ensemble program supports students to practise their

skills and work towards the goal of performing at live events. Highlights in the dynamic schedule include Cabaret Night, Gig at the Gov, Winter Concert and Speech Night.

Drama is also a shining light at Pulteney, as is our growing Dance program.

Whatever the level of your child's creative inclination, there is no shortage of opportunities to keep their sparks flying and minds spinning at Pulteney.

The Performing Arts are thriving at Pulteney and our new facilities support the School's ongoing commitment to provide outstanding teaching, learning and co-curricular opportunities for students of all ages to discover, perform, express themselves and grow.



“We aim to enhance student engagement in our sporting programs through skill development from a young age.”

MICHELLE DEN DEKKER, HEAD OF SPORT

Game On

SPORT AND ACTIVITIES

Pulteney's commitment to sport dates to the School's origins and in contemporary times has broadened to include a range of sports to suit all students. From awareness of personal fitness, through to competitive sport and supporting pathways for athletes in elite programs, Pulteney provides a tailored sporting experience.

The School's Directors program creates pathways for skill and game awareness development from Years 3 to 12 in an integrated year-on-year program overseen by a Head of Performance. Athletes whose skills and passions take them to representative teams are nurtured by the School's Elite Program Manager who creates supportive programs in consort with external program providers.

The School enjoys broad and state-of-the-art facilities on site including four ovals, 15 tennis courts, a hockey pitch, the Robert Henshall Sports Centre for basketball, netball and indoor sports, a gymnasium, a boatshed on the Torrens and facilities at West Lakes as well.

The range of sports and activities cater for all skills and interests, and include Athletics, Basketball, Volleyball, Cricket, Cross Country, Football, Hockey, Soccer, Netball, Rowing, Swimming, Softball, Tennis, House Sporting Competitions, Duke of Edinburgh's Awards scheme, Yoga, Chess and Debating.

With the city to the immediate north and Park Lands to the south, Pulteney is uniquely placed to enrich the lives of students through developing their sporting abilities, recreational interests and sense of physical wellbeing.

We encourage our students to see the world with breadth and perspective and provide opportunities for involvement in global communities.

Experiential Learning

From visiting an orphanage in Nepal to going on exchange in Germany or Japan, or from serving in Chapel to taking part in forums, students have self-discovery opportunities to realise their untapped potential and learn about others.

Education beyond the classroom is critical to the development of young people.

Co-curricular involvement fosters life-long friendships that sustain the individual and the school community as a whole.

Pulteney runs an Experiential Learning program, providing students the chance to travel overseas and help diverse communities.

This program builds resilience and broadens their horizons.

The Nepal earthquake in April 2015 severely damaged the school and orphanage with whom Pulteney has developed a close relationship. Since then, our community has rallied to raise substantial funds to assist with rebuilding efforts.

Camps provide a challenging outdoor education for students from Years 3 to 10. Students kayak, hike, rock-climb, surf and take part in orienteering with the aim of developing skills outside their home and classroom settings.

Outdoor Education builds resilience, confidence and independence and fosters closer bonds between peers.





“Pulteney has a talented team who together practice a unique and holistic approach to achieve our seven attributes of student wellbeing.”

STEVEN MCCULLOCH, HEAD OF STUDENT WELLBEING

Wellbeing

From Early Learning to Senior School students are provided with specialist lessons and programs centered on these seven wellbeing attributes:

1. Aspirational wellbeing:

Students are supported to become optimistic young people, to be aware of their capacity and of the possibilities in their life, to dream and plan for the future.

2. Cognitive wellbeing:

Students cultivate self-awareness, to be wise and confident decision makers and understand how to learn effectively and think critically.

3. Emotional wellbeing:

Students develop the capacity to become resilient and resourceful with the capability to exercise self-control and manage a range of powerful feelings and develop positive coping strategies.

4. Moral wellbeing:

Strong community values, modelled on inclusion, empathy, compassion, justice and fairness, are fostered in students. Students are in turn empowered with the integrity and confidence required to be accountable for their individual choices.

5. Physical wellbeing:

Students develop habits that enable long-term health and safety and enjoy the benefits that come with being physically healthy.

6. Social wellbeing:

Students learn how to build and grow positive relationships in diverse contexts.

7. Spiritual wellbeing:

Students are part of a community shaped by the deepest meanings and values through which people choose to live their fullest expression of their humanity.

Led by Steven McCulloch, Head of Student Wellbeing, registered psychologists provide support and guidance in relationships, mental health, motivation, sleep, parenting, decision-making and grief. Heads of House, tutors, home group and class teachers all contribute significantly to student wellbeing. Our School Chaplain also has a mentoring and counselling role. Everyone at Pulteney is committed to developing well-rounded, confident and happy young people.



Inclusive Learning is provided in a dynamic and contemporary way at Pulteney and assists students with identified learning needs from the Early Learning Centre to Year 12.

Inclusive Support

A collaborative and inclusive approach underpins the work of Inclusive Learning staff, classroom teachers, visiting specialists, peer tutors and parent volunteers who help students to achieve their learning goals.

The innovative and flexible Response To Intervention (RTI) model is the foundation of our Inclusive Learning services, which are available to any student with identified needs at any stage of their schooling.

The Inclusive Learning team achieves significant results, both with students who require extension and enrichment and students with learning challenges, ongoing health issues or social and emotional needs.

Support is tailored to the individual student and may be short or long term, individual or in small groups, based on their level of identified need, developmental progress and ongoing progress.

The dedicated teachers and education support workers who make up the Inclusive Learning team actively participate in regular professional development programs that have a focus on the latest evidence-based research.

The Inclusive Learning team is highly regarded for supporting students both in and out of the classroom, always working closely with the individual, their family, classroom teachers and the wider school community, to create the best possible opportunities for successful learning.



Founded in 1847, Pulteney has a long and rich history and is one of Adelaide's oldest schools.

Strength of Community

We host many events that embrace our traditions including Remembrance

Day, Valedictory, Founders' Day and Speech Night; however, our School's culture is best defined by our sense of close community. Humility, integrity and service are core values and forge strong bonds between Old Scholars and students, current and past parents.

During the year, our community celebrates Easter and Christmas concerts in Junior School, and the annual Middle and Senior School Musical. Parents are encouraged to attend weekly sport matches and support their child's team on Sports Day, at Anglican Cup and Intercol. Often Alumni return to play for the Old Scholars' sporting clubs.

Students can enjoy a lifelong connection with Pulteney and we

have a strong network of Old Scholars who now hail from more than 40 countries around the world. Old Scholars and parents guide students through our "Futures" programs, including mentor breakfasts and work experience. Old Scholars also enjoy a strong program of reunions each year.

Student initiated events, including Harmony Day, Reconciliation awareness, Red Shield Appeal, Cancer Council fundraisers and the Easter Appeal, also help to develop a keen sense of social justice and a desire to make a difference. Closer to home our students learn the importance of serving our community through providing food for local city homeless shelters.

Immersion in a supportive school family is a unique and wonderful aspect of the Pulteney Grammar School journey.

At Pulteney we teach cooperation and collaboration to enable our students to work together for the common good.

Teamwork & Leadership

STEVE MCCULLOCH
DEPUTY PRINCIPAL
WELLBEING



We believe that being part of a team and striving for success is so important. We strongly encourage student participation in a wide variety of Sport, Outdoor Education, Performing Arts teams and ensembles.

Our students are the leaders of tomorrow and we provide opportunities for student leadership at all levels within the School.

The most visible 'badge of office' is the white blazer, worn by Year 12 Prefects and House Captains. Dating back to 1955, the white blazer is an important symbol of integrity and service to the Pulteney community.

Beyond the white blazer, it is the School's view that leadership is everyone's responsibility.

Opportunities for leadership are provided in Music, Sport, Drama, Art, Venture Club, tutoring, community service, peer mentoring, student ambassadorship, House leadership, School tours, assemblies, Chapel and other key events.

Pulteney encourages students to provide service to their School, as well as the local and global community. Some of the most rewarding experiences were created on overseas tours of service to an orphanage and school in Nepal and a conservation trip to Borneo.

KATHERINE ADNETT
DEPUTY PRINCIPAL
TEACHING & LEARNING



Enrolment is as easy as 1, 2, 3...

We invite you to take a Pulteney tour.

We'll show you a day in the life of Pulteney students and staff, who make learning fun and engaging.

To take a tour, book online or give us a call:
pulteney.sa.edu.au
(08) 8216 5555

1. Apply to enrol

Fill out the Application for Registration online or in hard copy (posted on request).

This will place you on the wait-list.

Scan the QR code to apply online



Come & Try Day

All prospective students are welcome to spend a day as a Pulteney student. They will be teamed up with a buddy who will introduce them to School life. Call to arrange a day at your convenience and come in casual clothes with recess and lunch.

2. Wait-list or Offer

Pulteney may make offers in early March, two years prior to the enrolment year. If you apply after this time an offer will be made if places are still available, or your child will be placed on the wait-list.

You're welcome to call and enquire on the progress of your application at any time on **(08) 8216 5555** or email **enrolments@pulteney.sa.edu.au**.

3. Once you receive an offer, you have a place

With the offer letter is an Enrolment Agreement. To accept the place, return the Enrolment Agreement with a non-refundable \$750 Enrolment Fee to secure your child's place.

Orientation

Orientation packs are sent in October/November the preceding year, detailing when new students will meet their teachers and classmates on Orientation Day in October and November.

The orientation pack includes forms and online information, required to commence your educational journey at Pulteney.

Enrolment Information

Uniform & Books

Call **(08) 8216 5538**

to make an appointment for a fitting. The Uniform Shop sells all components of the Pulteney uniform except school shoes, sport shoes and sporting equipment.

The Uniform Shop is located at:

33 Gilles Street (cnr of Symonds Place), Adelaide

Books and stationery are ordered through an external provider. Communication is sent to families about book orders in December.

Class Sizes

- Reception to Year 2 are modelled on 22 students
- Years 3 to 10 are modelled on up to 25 students
- Year 11 and 12 average class sizes are approximately 15 students

Key Intake Years

- Early Learning Centre entry for three and four year-olds (apply early as places are offered from birth)
- Reception, with preference given to continuing ELC students
- Year 5
- Year 7

While there is typically one intake commencing at the start of the school year, Pulteney welcomes new students, when there are places available, at any time in their learning journey.

Don't hesitate to call our Enrolments Department on **(08) 8216 5555** or email **enrolments@pulteney.sa.edu.au** for further information on availability.



PULTENEY GRAMMAR SCHOOL

190 South Tce Adelaide South Australia 5000

T (08) 8216 5555 E info@pulteney.sa.edu.au

CRICOS 00369M

www.pulteney.sa.edu.au