



# International Students





# Contents

Principal's Welcome	3	Bring your own device	10
Pulteney's Mission, Vision, Values	4	Uniform	10
School Map	5	Overseas Student Health Cover	10
Learning	6	House System	11
Student Life	8	Student Wellbeing	11
Attendance	9	Information and Communication	12
Requirements for course progress	9	Apply & Enrol	13
School Hours	9	Schedule of Fees	15
Absence	10		

*Ngadlu Kaurna miyurna tampinhi. Parnaku tapa purruna kuma. Ngadlu purrutyi kumangka padnitya.*

Pulteney Grammar School is based on Kaurna land. As a school community, we acknowledge the Kaurna people, their spiritual heritage and living culture and our walk together to reconciliation.





## Principal's Welcome

Welcome to Pulteney Grammar School, where we embrace the opportunity to be a part of your educational journey.

As a school with a rich history, carved in South Australia's educational landscape, Pulteney celebrates its heritage as an institution committed to academic excellence.

Situated in the heart of Adelaide, South Australia and opposite vast parklands, Pulteney is a vibrant and active school which makes use of its unique city location and open natural spaces.

Our school leaders and teaching staff are committed to the core values and mission of Pulteney to provide a meaningful and useful educational experience that enables every student to prosper.

While honouring the traditions of our past, Pulteney is recognised for its innovative learning methods, partnerships, and entrepreneurial advancements and as a leader in modern approaches to education.

Your school years shape not only future career success, but it is also a time where social connections are made, and one's character takes form. At Pulteney, we value the responsibility of nurturing and guiding young people, understanding their strengths and talents, and assisting them to reach their potential.

Thank you for considering Pulteney to further your education. We look forward to the opportunity to work alongside you as you embark on a bright and successful future.

**Deb Dalwood**

Interim Principal

## Mission

*To provide a meaningful and useful educational experience for every student that enables them to be their best self.*

## Vision

*To prosper*

## Pulteney's Lived Values

### Authentic

Honesty,  
truth,  
integrity.

### Purposeful

Intentional,  
resolute and  
reflective.

### Personalised

Curated and  
distinctive  
experiences.

### Boundless

Limitless opportunities  
sought through  
passionate thought  
and deed.

### Enduring

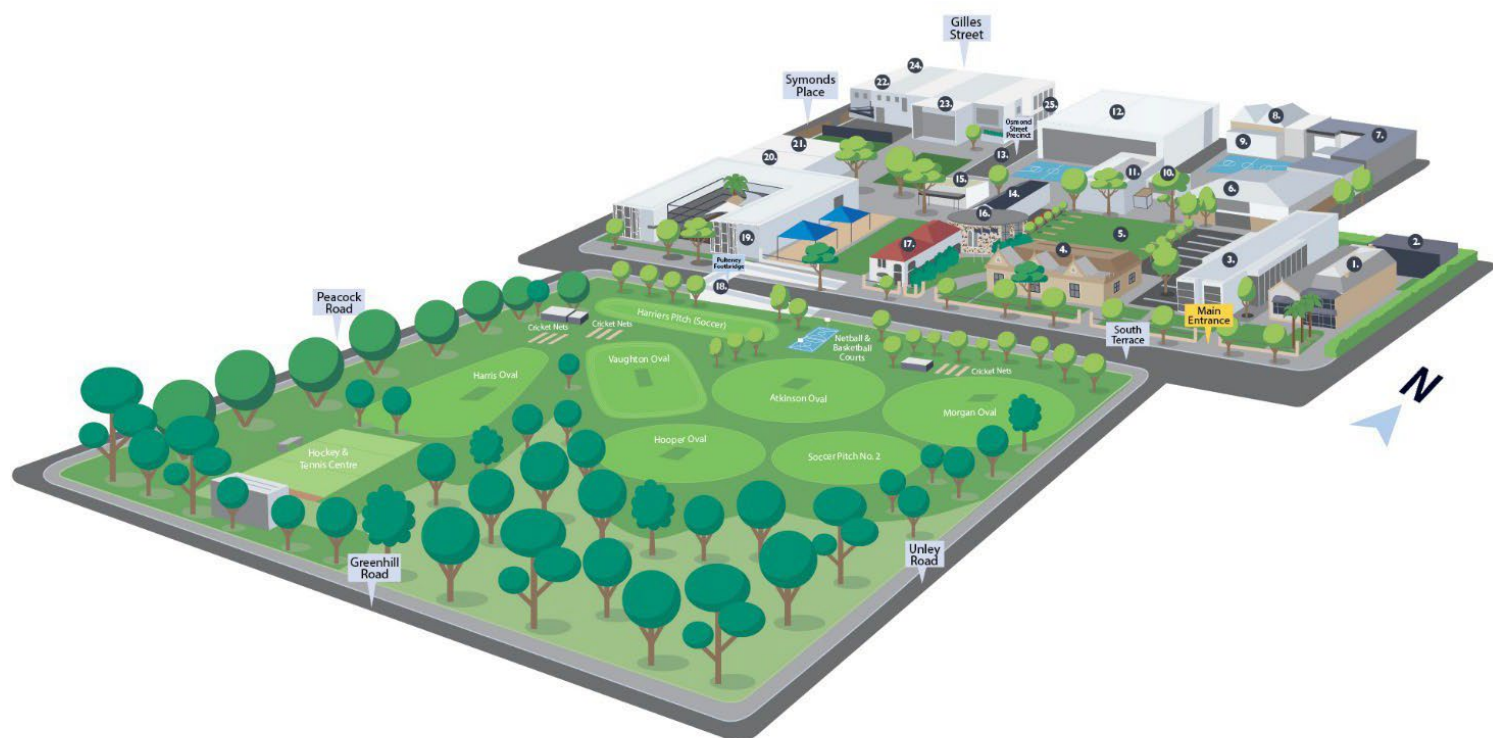
Legacy etched through  
a community's  
tradition, innovation,  
service and faith.

### Relationships

Respect and empathy  
fostered through  
collaboration  
and care.



# Pulteney Grammar School Map



- |  |  |
|--|--|
| <b>1.</b> Main Reception (Allan Wheaton House)     | <b>14.</b> Staff Room (Ray Wing North)               |
| <b>2.</b> Sam Leaker Courtyard                     | <b>15.</b> Inclusive Education (Allen)               |
| <b>3.</b> Year 7 – Year 9 Graham Lange Centre      | <b>16.</b> The Chapel of St Augustine of Canterbury  |
| <b>4.</b> Nicholls Performing Arts Centre          | <b>17.</b> eServices (Ray Wing South)                |
| <b>5.</b> 175 <sup>th</sup> Anniversary Quadrangle | <b>18.</b> Pulteney Footbridge                       |
| <b>6.</b> Science (Gare Wing)                      | <b>19.</b> ELC – Year 2 Kurrajong (Mackinnon)        |
| <b>7.</b> Year 3 – Year 6 Prep School (Kearns)     | <b>20.</b> The Dance Factory / OSHC                  |
| <b>8.</b> Junior Resource Centre                   | <b>21.</b> Middle & Senior School Resource Centre    |
| <b>9.</b> Health Centre                            | <b>22.</b> Art Centre (Isaachsen)                    |
| <b>10.</b> The Pulteney Pantry                     | <b>23.</b> Year 10 – 12 (Centre for Senior Learning) |
| <b>11.</b> Wyatt Hall                              | <b>24.</b> Uniform Shop (Entry via Gilles St)        |
| <b>12.</b> The Robert Henshall Sports Centre       | <b>25.</b> Osmond Street Cafe                        |
| <b>13.</b> Osmond Street Precinct                  |  |

*Map is for indicative purposes only and is not to scale.*

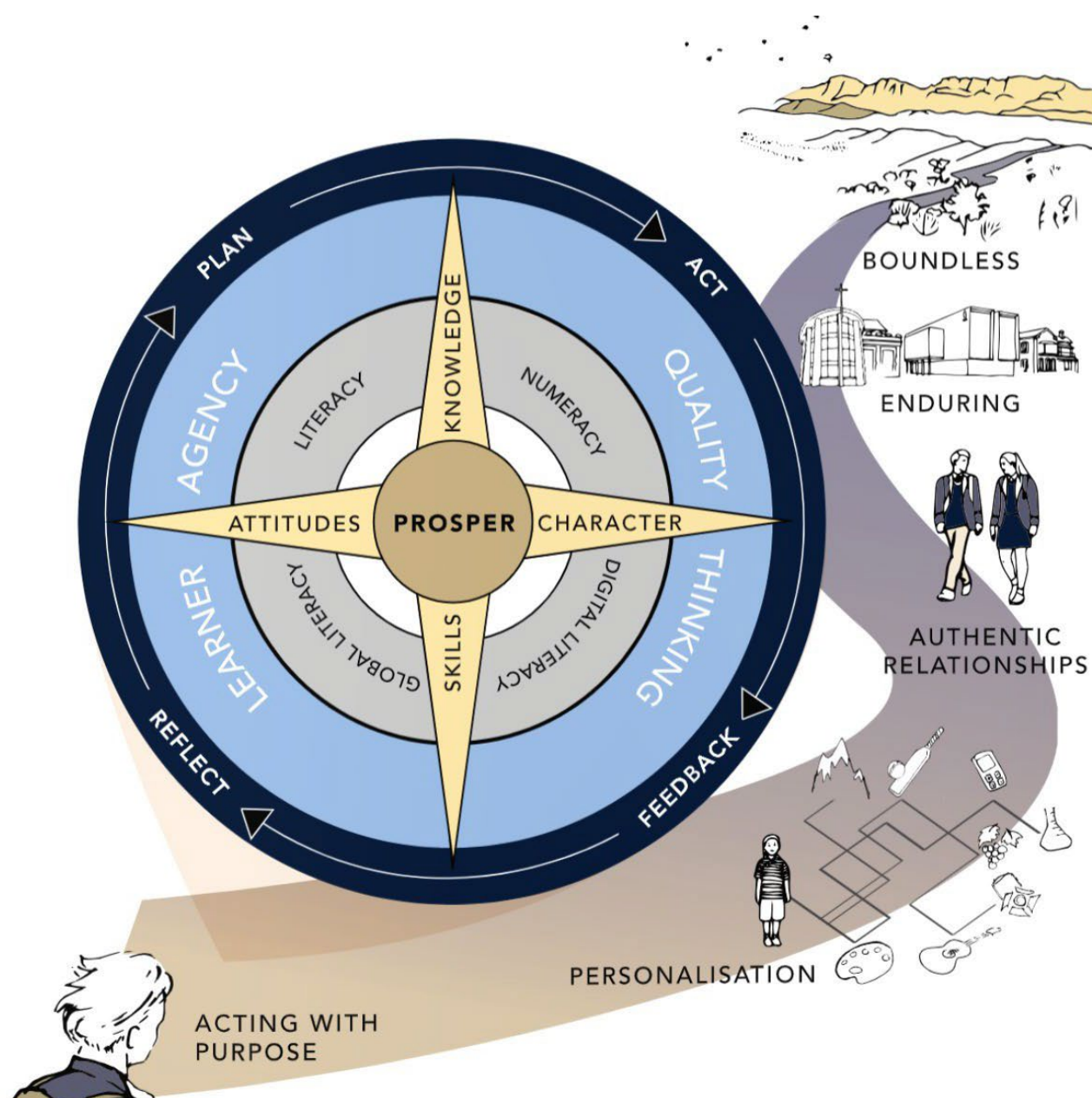


# Learner Compass

## Our Learning Principals

Pulteney students prosper when:

- Learning is socially constructed and connected locally, globally and digitally.
- Learning is inclusive and personalisable and is designed in recognition of a student's strengths, interests and passions to inform learner pathways.
- Learning is evidence informed and data-driven and is enabled by continuous quality feedback and assessment practices that identify mastery, readiness and growth.
- Learning experiences foreground the transfer of knowledge, skills and conceptual understanding for deep learning and growth.
- Quality thinking and learner agency are taught, applied, recognised and grown.



# Learning

At Pulteney, our experienced and passionate teachers and school leaders work together to deliver a personalised and inclusive learning experience. The robust curriculums from ELC to Year 12 ensure a breadth of subjects and educational opportunities are offered. Pulteney's study environments are designed to embrace modern teaching methods and collaborative learning. Additionally, the School takes a thoughtful and constructive approach to new technologies and the artificial intelligence era. As teaching and studying is always adapting to the modern world, the School remains at the forefront of innovative teaching methods, partnerships and entrepreneurial advancements.

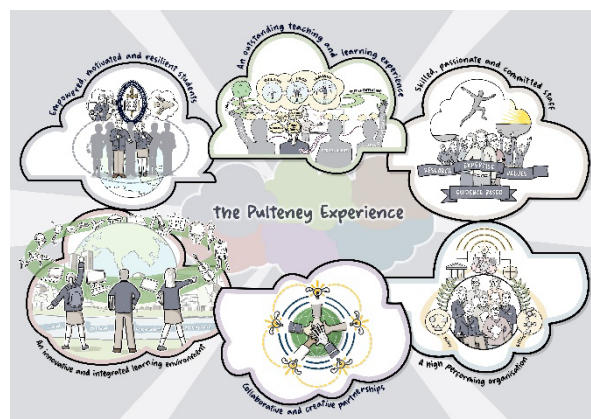
From the start of their schooling, Pulteney students are given the support, resources, and guidance to be confident learners. They are encouraged to take control of their learning pathways. To build strong relationships and participate in Pulteney life.

The Pulteney Experience is about a personalised education where:

- There are boundless opportunities that offer students direction and purpose.
- There is an integrated student experience with a balance of explicit instruction, implicit learning and active participation which plays out across multiple contexts across the School.
- There are broader measures of achievement that are recognised through both established and new ways of assessing, for the purpose of growth, from Reception to Year 12.

The Pulteney experience is a term used to describe what one can expect when joining the Pulteney community. It encapsulates what is offered to students for their whole education as well as how this involves other members including families and Pulteney staff. The School's characteristics have evolved over the decades, however, it distinctly remains a place where students can come for an meaningful education together with memories and friendships to last a lifetime. Pulteney staff and students are proud of their school.

The sense of camaraderie is felt through all year levels as students are valued stakeholders who contribute to their learning spaces and take on leadership responsibilities at a young age.







## Student Life

**Senior School (*one nighty*)** Years 10-12

**Middle School** Years 7-10

**Junior School** Reception to Year 6

**Early Learning Centre** 3 to 5 years old



---

# Attendance

Please note that full-fee-paying international students are obligated to attend at least 80% of their scheduled classes, as required by their visa. In cases of non-compliance with this attendance requirement, the Department of Home Affairs may be informed.

## School hours

Our school operates from 8:30 AM to 3:30 PM, Monday through Friday. Consistent attendance is important including participation in sports training, scheduled competitions, and various mandatory events. These events may take place outside regular school hours, including weekends.

## House System

Our students participate in House competitions including athletics, cross country, performing arts and swimming, which provide positive and memorable occasions for students to work together as a team and develop skills in this crucial area. Students are encouraged to participate in all House activities, including events that take place outside of school hours. Pulteney's House system provides student leadership opportunities and is designed to strengthen relationships and a valuable team spirit across year levels.

# Absence

To notify the school of an absence, please call +61 (08) 8216 5555

Alternatively, email [absentees@pulteney.sa.edu.au](mailto:absentees@pulteney.sa.edu.au)

# Requirements for satisfactory course progress

It is a requirement for students on a student visa to maintain satisfactory course progress. To demonstrate satisfactory course progress, students will need to achieve a C standard in all courses in any study period. If a student does not achieve a minimum C standard in any course in a study period, the School will formally contact the parent(s) to advise there will be a meeting with the student to develop an intervention strategy for academic improvement. If the student does not improve sufficiently academically and achieve satisfactory course progress by the end of the next study period, Pulteney Grammar School will advise the student in writing of its intention to report the student for breach of visa condition.

---

## Bring your own Device

From year 6, students bring their own Apple or Windows device for the purpose of learning. Students and teachers work across the Office 365 productivity suite as well as utilising platform specific programs which can output to a universal format such as PDF, MP3 and MP4. The information contained on the Pulteney Parent Portal outlines the minimum hardware specifications for devices.



## Uniform

A 30-minute appointment for all new uniform fittings are required. Please make an appointment by calling 08 8216 5538 or emailing [pulteneyshop@pulteney.sa.edu.au](mailto:pulteneyshop@pulteney.sa.edu.au). The uniform shop is located near the School at 33 Gilles Street (corner Symonds Place), Adelaide SA 5000

## Overseas Student Health Cover

International students on a student visa (subclass 500) are required by Commonwealth Government legislation to have overseas Student Health Cover (OSHC) for the duration of their studies in Australia. Students can arrange OSHC independently or ask the School to purchase it on their behalf. If the OSHC is arranged by the School, the premium must be paid in full prior to the School issuing the electronic Confirmation of Enrolment required for the visa application.

The OSHC premium will not be refunded by the School. The responsibility for seeking a refund from the medical insurance provider lies with the student.



---

# House System

Pulteney is committed to cultivating a vibrant and inclusive school community through its House system. Designed to inspire leadership skills and nurture a sense of belonging, the House system ensures that every student can participate in school activities and gain points for their House. House Captains at each year level, assist with leading and organising events such as Sports Day and swimming carnivals. Upon enrolment, students are assigned to a House, with family members placed in the same House. The House System is a longstanding tradition that nurtures a competitive spirit in a safe environment and encourages our students to strive to their personal best.

The four houses at Pulteney Grammar School



# Student Wellbeing

Students are provided with specialist lessons and programs centered on their wellbeing. The School participates in pastoral care and offers counselling and educational support for all year levels.

Pulteney has a wellbeing team dedicated to the health and wellbeing of all students. The team works with Heads of Schools, Heads of House, tutors and teachers to apply their psychological and educational expertise to help students overcome challenges, build resilience and maintain balance in their lives. The image below shows seven attributes central Pulteney's holistic and personalised approach to wellbeing.





## Information & Communication

### Parent Portal



Parent Portal is the hub to access all the information that families need including reports, event dates and sports fixtures.

Contact Pulteney Grammar School

**Main Reception:** +61 8 8216 5555  
[info@pulteney.sa.edu.au](mailto:info@pulteney.sa.edu.au)

Head of International Student Program:  
[international.enrolments@pulteney.sa.edu.au](mailto:international.enrolments@pulteney.sa.edu.au)

#### Emergency

Dial **000** for emergency (Police, Fire, Ambulance).  
Dial **131 444** for non-urgent police assistance.

#### Visa

Contact Department of Home Affairs for visa and immigration matters.

Visit **70 Franklin Street, Adelaide 5000**  
Dial **13 18 81**



# Apply & Enrol

Pulteney is a co-educational school registered as a provider trading under Pulteney Grammar School Incorporated. The School is a Commonwealth Registered Institute for Overseas Students to enrol as Full Fee Paying 500 visa subclass students (CRICOS Provider No 00369M)

## Registered Courses

Course Code	Course Name	Course Level
019537M	Primary Years (Reception to Year 6) Co-Educational	Primary School Studies
019538K	Secondary Junior Years (Year 7-10) Co-Educational	Junior Secondary Studies
019539J	Secondary Senior Years (Year 1-12) Co-Educational	Senior Secondary Certificate of Education

## Criteria for enrolment

Applications from International Students are assessed and considered by:

- the number of positions available at the appropriate year level.
- the resources of the School.
- the student's academic records and English language proficiency level for the proposed course of study.
- English language proficiency is determined by the result of a test undertaken by an approved English Language Assessment organisation.
- Students must reside with one or both parents, a suitable relative, or a school-approved homestay for the duration of their visa.

## English Proficiency Requirement

International students require an adequate command of English so that they can manage the work in mainstream classes.

A condition of enrolment is that a student undertakes a formal English Language Assessment upon application for admission to Pulteney. This can be carried out in their country of origin through the Australian Education Assessment Services ([www.aeas.com.au](http://www.aeas.com.au)) or another official English assessment organisation.

Offers will only be made to international students who require 20 or fewer weeks of intensive English language course prior to the commencement. The required length of intensive English language for each course level can be found at <https://www.aeas.com.au/aeas-report/>.

Students may be required to undertake intensive English language study prior to their entry to mainstream study. Pulteney will provide parents with details of schools able to offer this service.

---

# Application and enrolment process

## Step 1 – Lodge

To begin the application process, please download the Application for Admission form from the international page on the Pulteney website.



Please submit form to [international.enrolments@pulteney.sa.edu.au](mailto:international.enrolments@pulteney.sa.edu.au).

Once the application and required documents are received, an invoice will be issued for an **AUD100.00** non-refundable application fee.

It is important to note that lodgment of the Application for Admission form is not an Offer of Enrolment or notice of acceptance.

## Step 2 – Assess

Upon receipt of the application fee, the application will be assessed, including evaluation of reports and of English language proficiency. An interview with the Principal will be arranged if the submission is received with all relevant documents. A final decision notice will be provided to the applicant as soon

as possible. The final decision is at the discretion of the Principal.

## Step 3 – Enrol

The enrolment process will commence with a Letter of Offer of Place made in writing, and this will be accompanied by a Fee Invoice.

Acceptance of Enrolment is made by completion of the relevant forms and payment of the Enrolment Confirmation Fee, a deposit equivalent to one-half year's tuition and fees plus non-tuition fees for the same period.

Upon receipt of the Acceptance of Enrolment form and the monies, an electronic Confirmation of Enrolment certificate (eCoE) will be issued for the application for Student Visa 500.

## Step 4 – Prepare for commencement.

When enrolment is completed, the family will receive a welcome information pack via email with key information to prepare the student for their commencement at Pulteney Grammar School. Students and parents can access <https://parents.pulteney.sa.edu.au/> to obtain all the detailed information about the school.

For any enquiries, please email [international.enrolments@pulteney.sa.edu.au](mailto:international.enrolments@pulteney.sa.edu.au). Visit <https://www.pulteney.sa.edu.au/international-students/>



# Schedule of Fees 2024 – International Students

Reception to Year 12	
	Total
Mid Year Reception	\$17,800
Reception	\$26,600
Year 1	\$27,450
Year 2	\$27,450
Year 3	\$29,600
Year 4	\$29,600
Year 5	\$33,500
Year 6	\$34,000
Year 7	\$39,300
Year 8	\$41,400
Year 9	\$41,600
Year 10	\$43,350
Year 11	\$43,350
Year 12	\$43,350

Early Learning Centre (ELC)	
Booking	
Educational Day (8.15am - 3.15pm)	\$123 per day
Before School Care* (7.30am - 8.15am)	\$20 per session
After School Care (3.15pm - 6.00pm)	\$31.50 per session

Outside of School Hours Care (OSHC)	
Booking	
Before School (7.30am - 8.15am)	\$20 per session
After School (3.30pm - 6.00pm)	\$31.50 per session
Vacation Care (7.30am - 6.00pm)	\$85 per session

Only excursion fees during Vacation Care will be charged as an additional charge on the day of the excursion.

Instrumental Music Tuition Program	
Booking	
Instrumental music lessons - 30 minutes	\$41.50 per lesson
<small>music tuition does not include the cost of instrument hire</small>	

Rendering of Accounts			
		Account Issued	Payment Due
For 2024, tuition fees and consolidated charges for Pulteney Grammar School (the School) will be rendered as follows:	Semester 1	24 January 2024	2 February 2024
	Semester 2	8 July 2024	26 July 2024



# For further information

+61 (08) 8216 5555

[pulteney.sa.edu.au/international-students/](https://pulteney.sa.edu.au/international-students/)

[international.enrolments@pulteney.sa.edu.au](mailto:international.enrolments@pulteney.sa.edu.au)

190 South Terrace Adelaide, South Australia 5000