

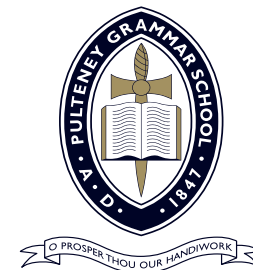
Still thinking about Pulteney?
Visit pulteney.sa.edu.au



2018

Year 12

Results



PULTENEY

Pulteney Grammar School

190 South Tce Adelaide
South Australia 5000

Telephone (08) 8216 5555
Facsimile (08) 8216 5588

Email info@pulteney.sa.edu.au
Web www.pulteney.sa.edu.au

We celebrate the achievements of all of our Year 12 students, across their academic, sporting and cultural pursuits.

We are delighted to share with you that Pulteney Grammar students have once again excelled in completing the South Australian Certificate of Education (SACE), with 100% of our Year 12 students achieving their SACE.

Our students have studied diligently, and this year's outstanding results are testament to their hard work and application across the breadth of subject areas. Their teachers and I are extremely proud of our newest Old Scholars.

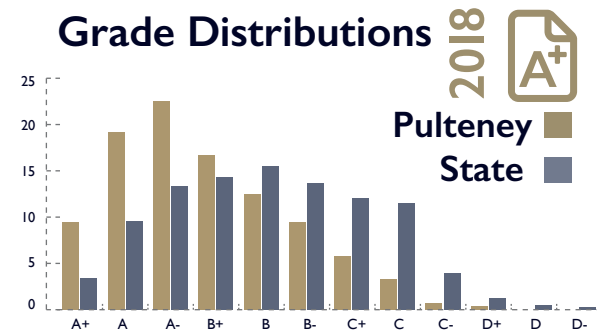
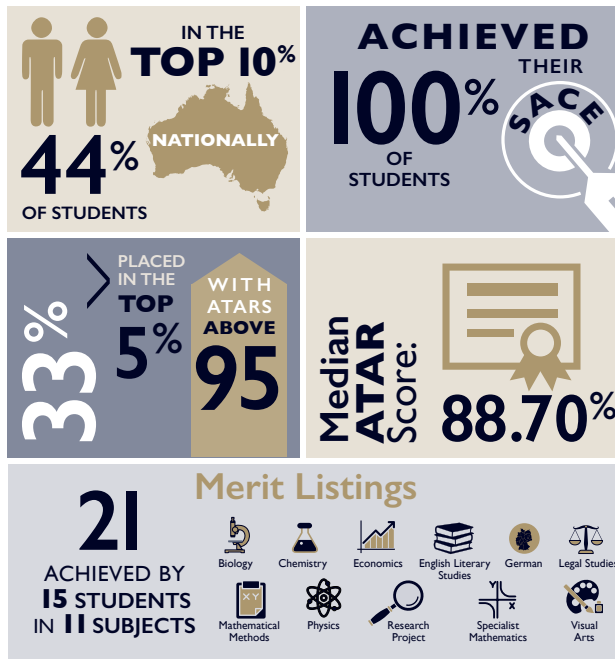
On behalf of the Pulteney community, I wish our 2018 cohort every success as they embark on the next exciting chapter. Their future is bright, and we know they are well-prepared for the world beyond school.

I thank our parents and families for their support of our students. I also thank our teachers and non-teaching staff for their dedication and professional guidance in helping each student to achieve to their potential.

More than ever, we are equipping our students to be agile, thoughtful and independent learners and teaching them the skills needed to adapt with confidence and find their place in the world, wherever their exciting and varied futures may take them.



Anne Dunstan
Principal

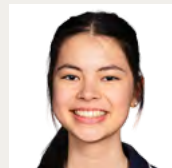


Dux and Proxime Accessit



2018 Dux of Pulteney Grammar School
Pippa Adkins

ATAR **99.55**



2018 Proxime Accessit
Erica Turner

ATAR **99.50**

Learning Beyond Pulteney Grammar

The Class of 2018 were a talented group of young women and men who had a diverse range of interests and abilities. These graphics highlight this diversity and represent their learning destinations and career choices beyond Pulteney in 2019.

2018 Tertiary Offers

Percentage of students who received tertiary offers for their first or second university preference.

